



# Session 5A: Global cities comparison: Lessons on Bike Transportation

11<sup>th</sup> Annual Silicon Valley Bike Summit Aug 12 & 13, 2021

# Global Cities Comparison

## Bike Summit 2021

Bob Wenzlau  
Palo Alto, California

Gaby Hernández  
Mexico City, Mexico

Kees Lems  
Enschede, Netherlands

Johannes Sommerfeld  
Heidelberg, Germany

Abhijit Lokre  
Mysuru, Karnataka, India

Margarita Parra-Cobaleda  
Auckland, New Zealand



# MEXICO CITY, MEXICO

**Gaby Hernandez**, bike tour guide and Bike activist



# Mexico City

Extension: 1,485 sq kms.

573 sq mi

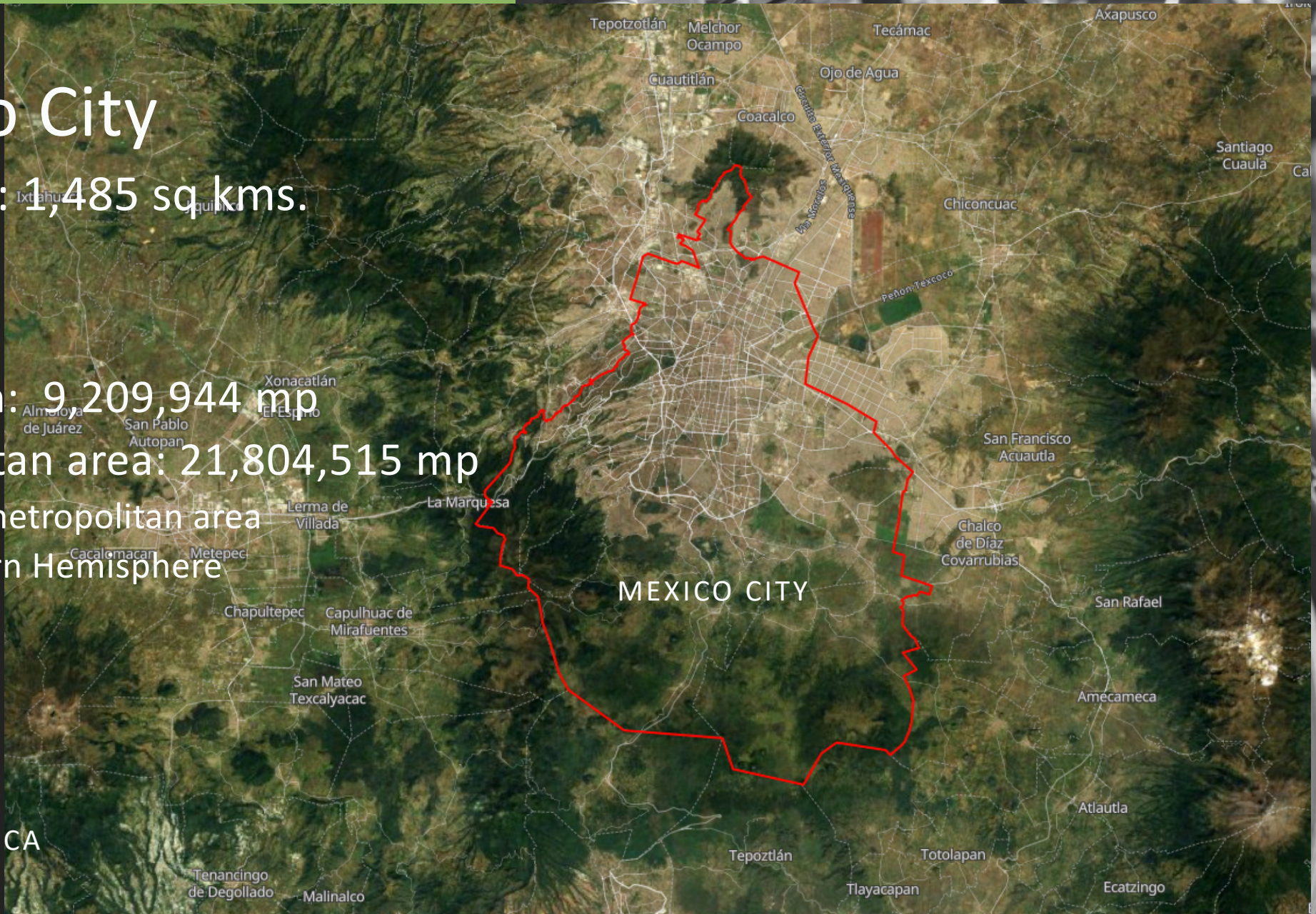
Population: 9 209,944 mp

Metropolitan area: 21,804,515 mp

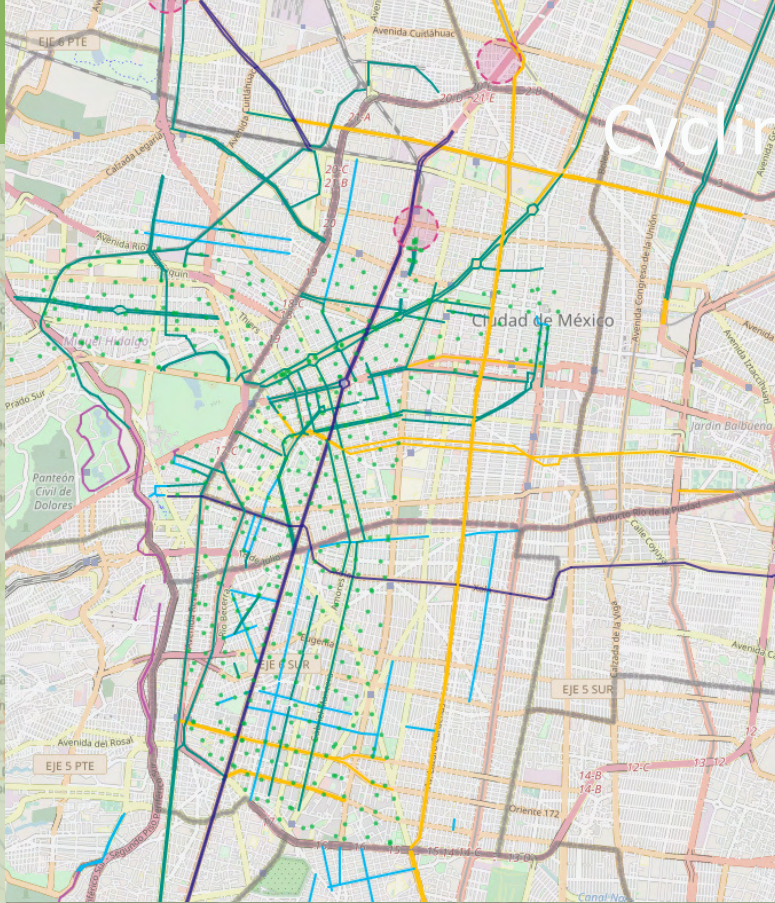
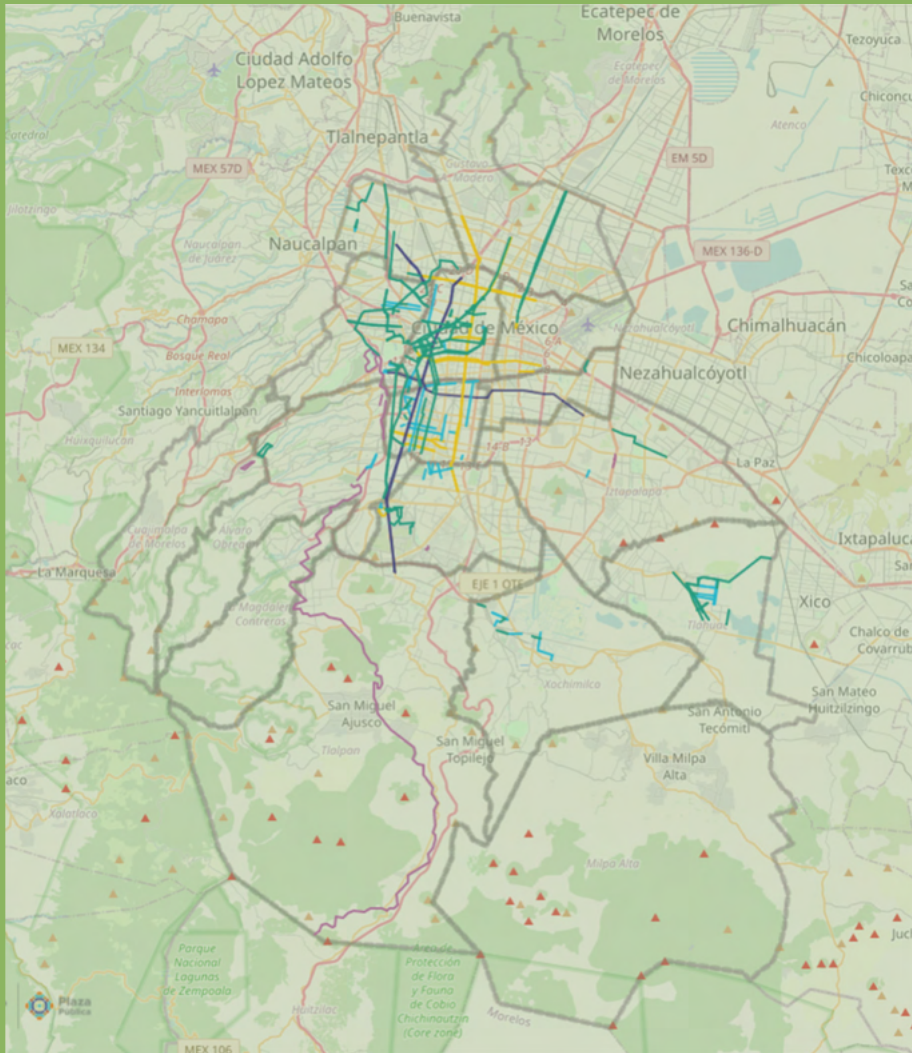
2nd-largest metropolitan area  
in the Western Hemisphere



MEXICO  
NORTH AMERICA







## Cycling Infrastructure

259 kilometers

180 miles

combined cycling  
infrastructure

only 130 km /80 miles

protected bike lanes

53 km /33 miles

painted lanes







# CICLOVIA RECREATIVA / OPEN STREETS



## SUNDAY FUN DAY

Every Sunday the Urban Movility agency takes charge along with the transit police to close car traffic ensuring safety to families, cyclists, runners and pets to enjoy outdoors healthy activities, a joyful way for democratization of the streets.



55 km

08:00 a 14:00 horas

- Reforma
- Centro Histórico
- Condesa
- Patriotismo
- Div. del Norte
- Eje 7 Sur
- Calz. de Guadalupe



- May 2007 - 10 k  
7,000 participants
- May 2020 - 55 K  
75,000 participants



# CICLOVIA RECREATIVA

LARGEST CICLOVIA IN LATINOAMERICA

3RD IN THE WORLD

- First 3 Sundays of the month 55Km / 34 miles
- Last Sunday of the month 97Km / 60 miles including the inner freeway

# EMERGENCY POP-UP LANES

INSURGENTES AVE



JUNE 2020

40 Km / 25 miles

increase 275 % cyclists





# CHALLENGES



## ROAD SAFETY

- DRIVERS TEST
- VISION ZERO
- MULTIMODAL INTEGRITY

## PUBLIC IMAGE

- ASPIRACIONAL
- LAW ABIDING
- JOY







ACTIVE MOBILITY  
GOALS 2024

3%

BICYCLE TRIPS

600 Km.

CYCLING INFRASTRUCTURE



# MYSURU, INDIA

**Abhijit Lokre, The Urban Lab**

# Cycling In India Mysuru







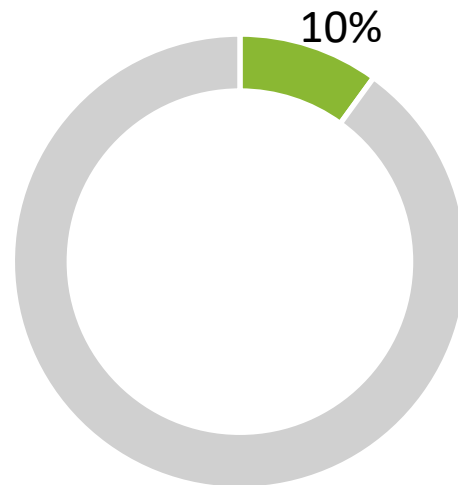
Former capital of the State of Mysore

# Mysuru

- Located in Karnataka
- Area of 108 sq.km
- Population of 1.2 million
- 10% cycling mode share



1.2 million





# Key Cycling Initiatives

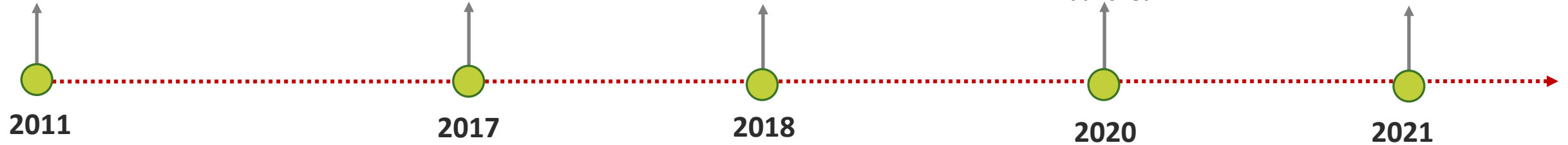
Cycling infrastructure

PBS Launched in June 2017

Permit based system

Cycle for Change initiative launched

Expansion of network



## Public Bike Sharing

- PBS identified as a key strategy to increase cycling
- Started in 2017 as a dock system with pedal cycles
- Service area of 22 sq. km
- 450 cycles
- An average of 2 trips per cycle per day

## Cycle for Change

- India **Cycles4Change Challenge** is an initiative of the Smart Cities Mission
- Aimed to encourage cities to improve cycling infrastructure
- Pilot of 9 km proposed

# PBS Indicators

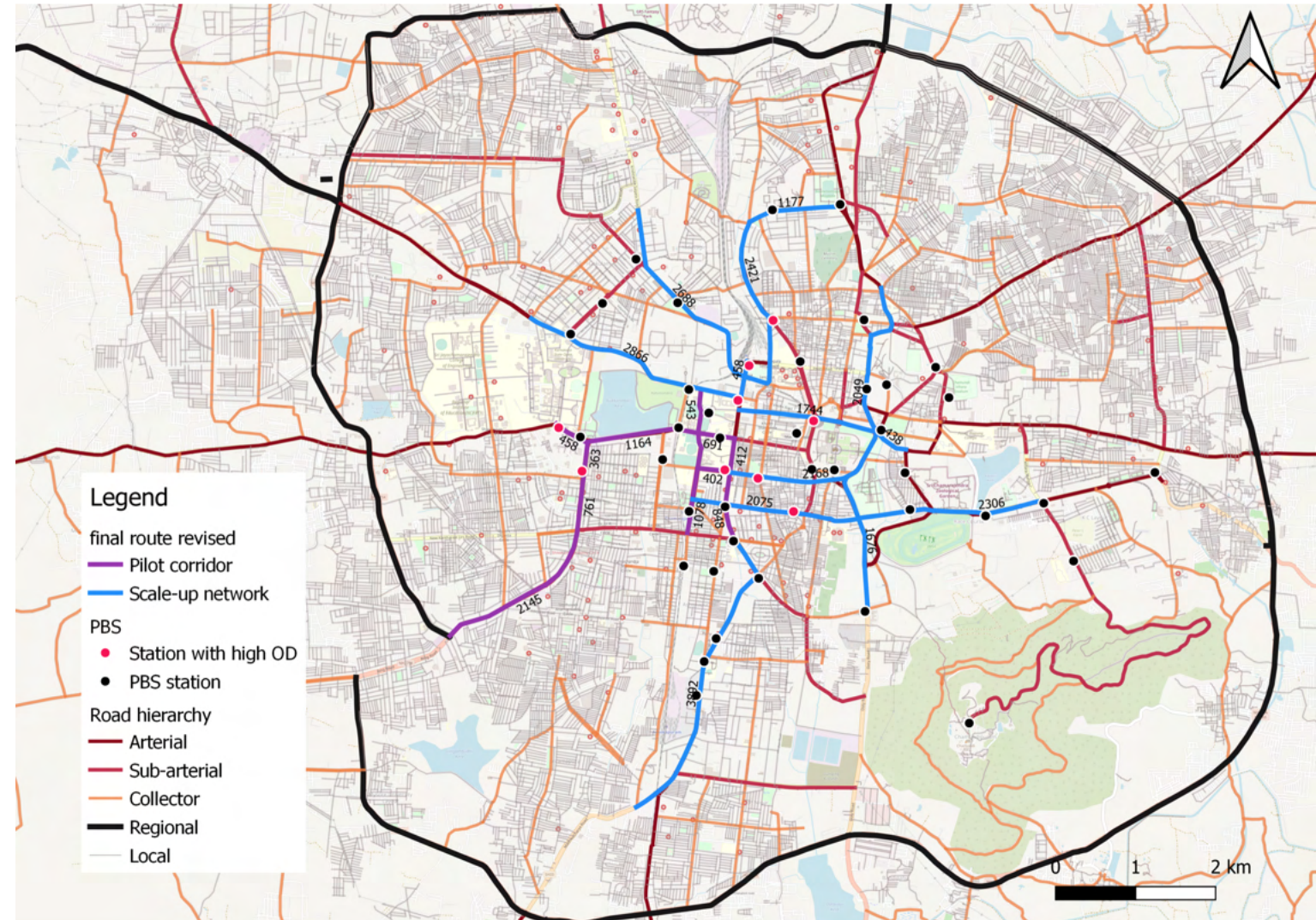
- Well connected network
- Average distance between stations – 400m

**1000** Average Daily Trips (Pre Covid)

**2.1 trips** per cycle/day (Pre Covid)

**300** Average Daily Trips (Post Covid)

**0.7 trips** per cycle/day (Post Covid)





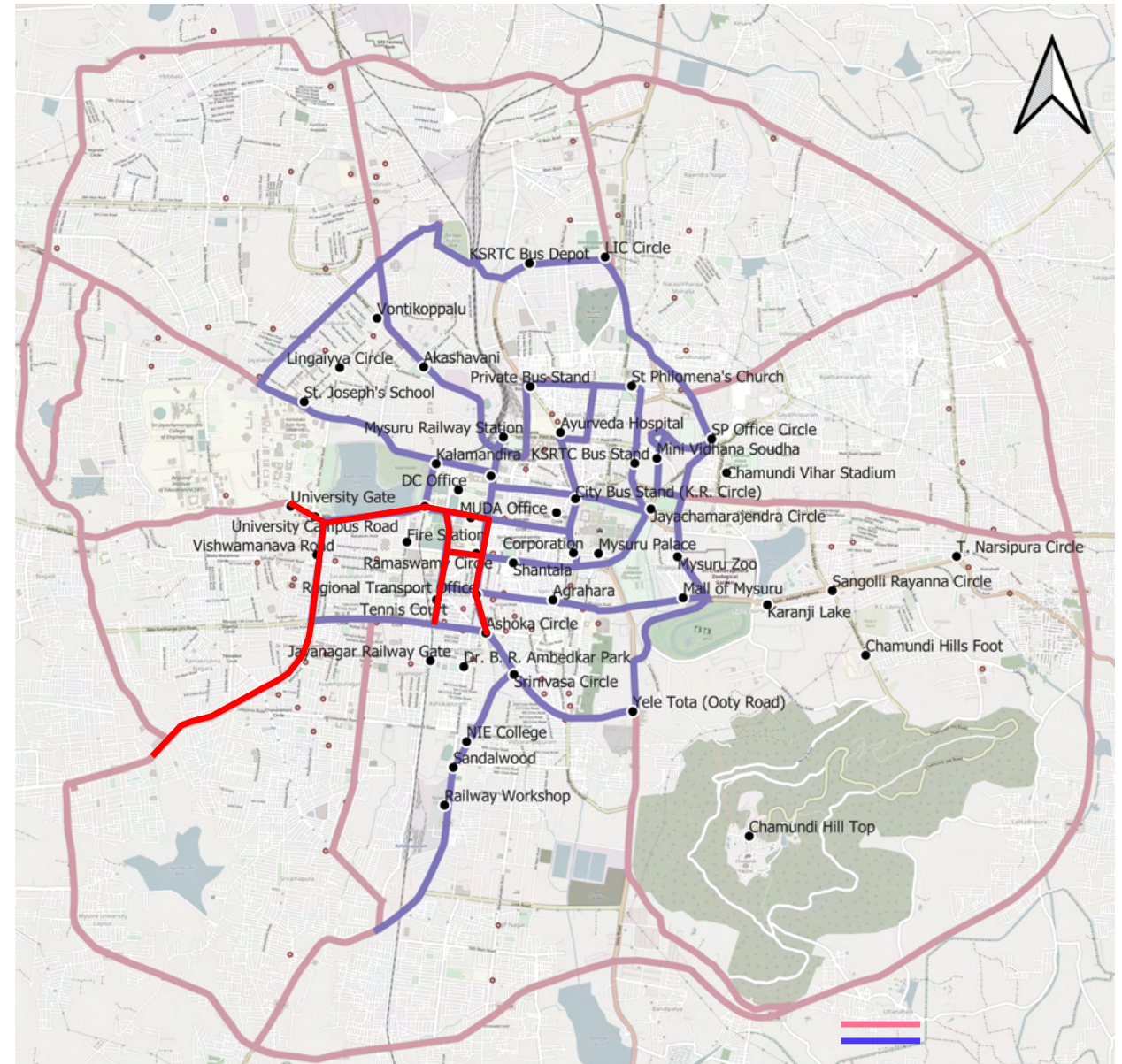




# Expansion Plan

Under Cycle4Change

- Total network 45 km
- Pilot Corridor 9 km
- Add 1000 pedal assist cycles





**HEIDELBERG, GERMANY**

**Johannes Sommerfeld**

# HEIDELBERG (GERMANY)

## Silicon Valley Bike Summit “Global Cities Comparison”

Johannes Sommerfeld

Cyclist and (global) Citizen, City of Heidelberg (Germany)

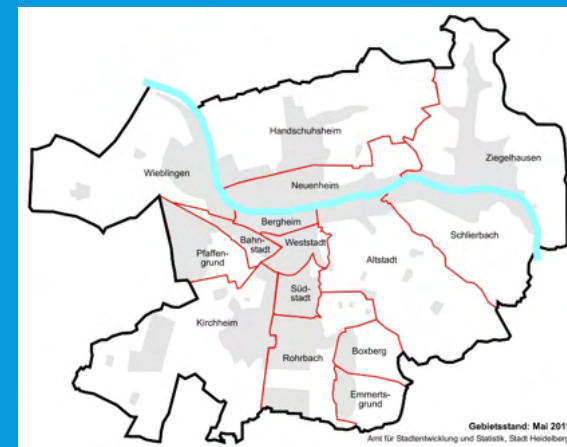
Member, German Cyclists Association (ADFC, Deutscher Allgemeiner Fahrrad-Club e.V.)

13.8.2021

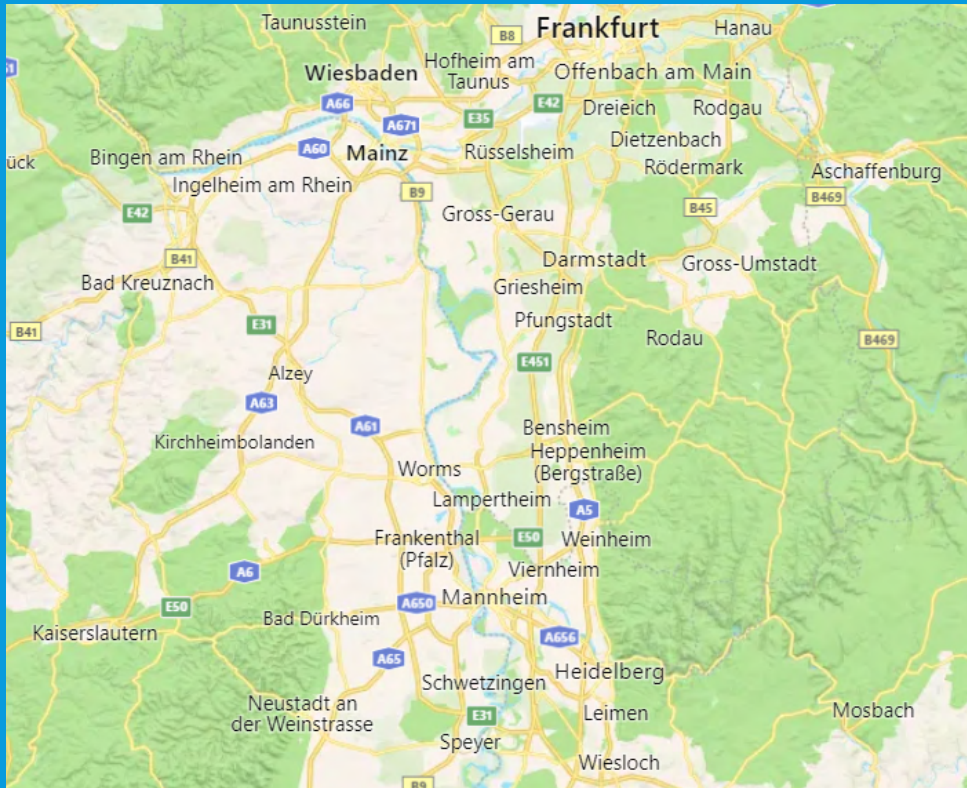


# GREETINGS FROM HEIDELBERG (GERMANY)

- A city of some 160.000 inhabitants, « young » (39% below of 30 years of age), 15 « City Quarters »: Old town , Heidelberg Castle, Oldest University in Germany (founded 1386)
- Proud Sister City of Palo Alto, since 2017
- Embedded, regionally by Local Government Area Rhein-Neckar Kreis as well as Innovation Area « Metropolregion Rhein-Neckar »
- German Cyclists Association (Allgemeiner Deutscher Fahrrad-Club e.V., ADFC), Rhein-Neckar Chapter, <https://rhein-neckar.adfc.de/>



# 12 JUNE 1817





# BIKE TRANSPORTATION EFFECTIVENESS

https://www.heidelberg.de/hd/HD/Leben/Fahrradfreundliches+Heidelberg.html

**Heidelberg** 16°C  Kontakt Stadtplan Presse Stadtblatt   DE ▼

**Leben** Rathaus Besuchen Lernen & Forschen Arbeiten Entwickeln

[Startseite](#) / [Leben](#) / [Freizeit](#) / [Freizeitangebote](#) /  
Fahrradfreundliches Heidelberg

↳ **Fahrradfreundliches Heidelberg**

  
**Fahrradklima-Test 2020**  
Heidelberg zählt erneut bundesweit zu den fahrradfreundlichsten Städten [mehr dazu »](#)





## Fahrradfreundliches Heidelberg


### Kurze Wege von A nach B

Mit dem Fahrrad kommt man in Heidelberg schnell ans Ziel. Es ist also kein Zufall, dass die Heidelbergerinnen und Heidelberger **33 Prozent aller innerstädtischen Wege mit dem Fahrrad** zurücklegen, wie die bundesweite Studie „Mobilität in Städten - SrV“ 2018 ergeben hat.

# JULY 4, 2021


https://rhein-neckar.adfc.de

Allgemeiner Deutscher Fahrrad-Club Kreisverband Rhein-Neckar e. V.



Aktuelles Politik Verkehrspädagogik Jugend Veranstaltungen ADFC Rhein-Neckar Sei dabei Presse Login Suche

ADFC unterstützen!



1000 demonstrieren für Radschnellweg  
Rund 1000 Radfahrerinnen und Radfahrer demonstrieren am Sonntag, 4. Juli 2021, für den Radschnellweg von Heidelberg nach Mannheim.

Weiterlesen >





# MANY THANKS

PLEASE CYCLE BY AND VISIT

## Johannes Sommerfeld

[j\\_sommerfeld@hotmail.com](mailto:j_sommerfeld@hotmail.com)

<https://www.linkedin.com/in/johannes-sommerfeld-93a7ob7b/>

<https://globalcyclingculture.net/>



Enschede, Netherlands

Kees Lems



A photograph showing three cyclists from behind, riding on a paved path. The cyclist on the left is wearing a red shirt and black shorts. The middle cyclist is wearing a white shirt and blue shorts. The cyclist on the right is wearing a striped shirt and tan shorts. The background features green trees and a building. A red semi-transparent banner is overlaid on the top half of the image, containing the title and author information.

# Cycling in Enschede, the Netherlands

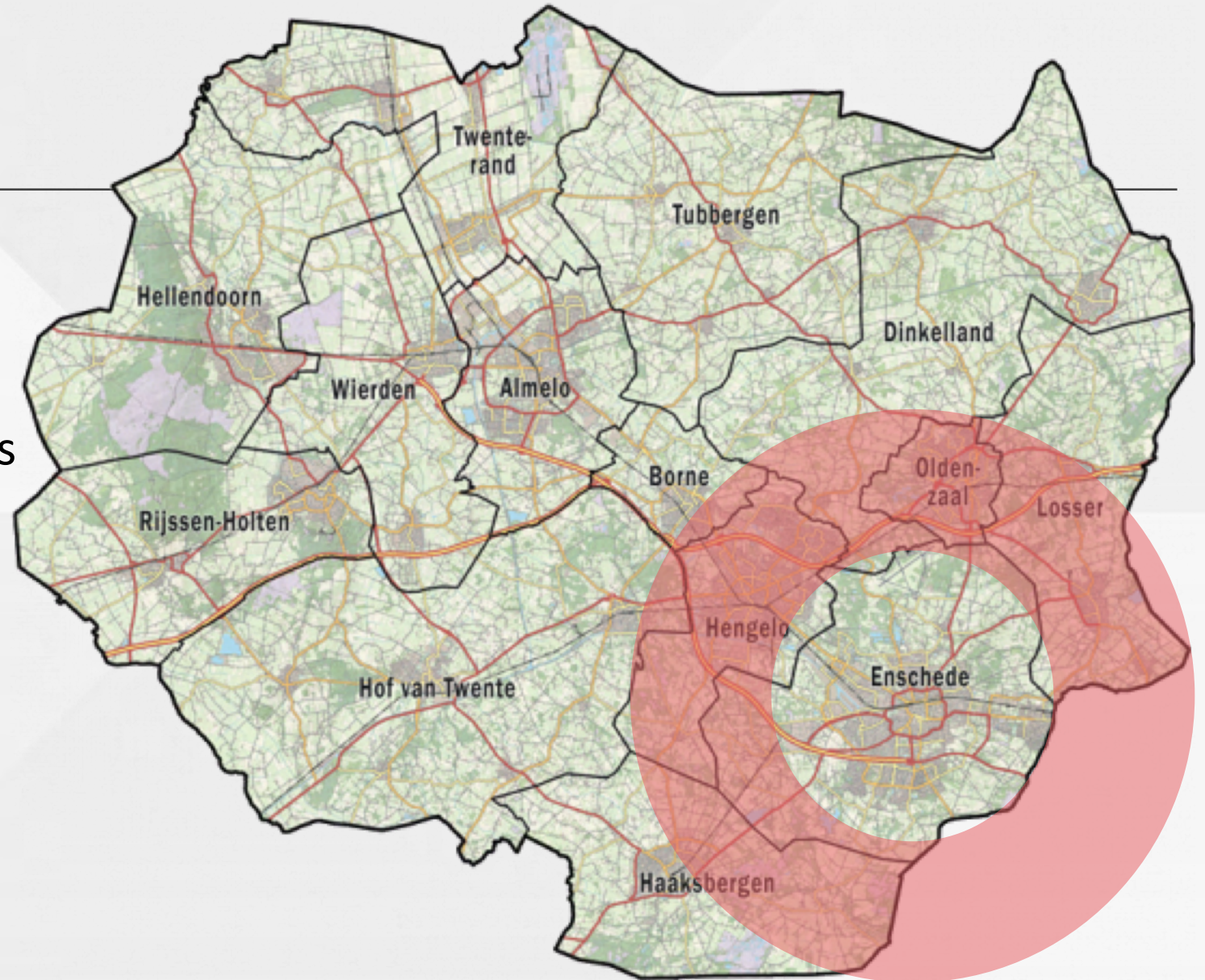
*Kees Lems, traffic engineer*



# Region Twente

Eastern part of the Netherlands  
Region Twente:  
600.000 inhabitants  
14 municipalities

City of Enschede  
160.000 inhabitants  
Close to the German border





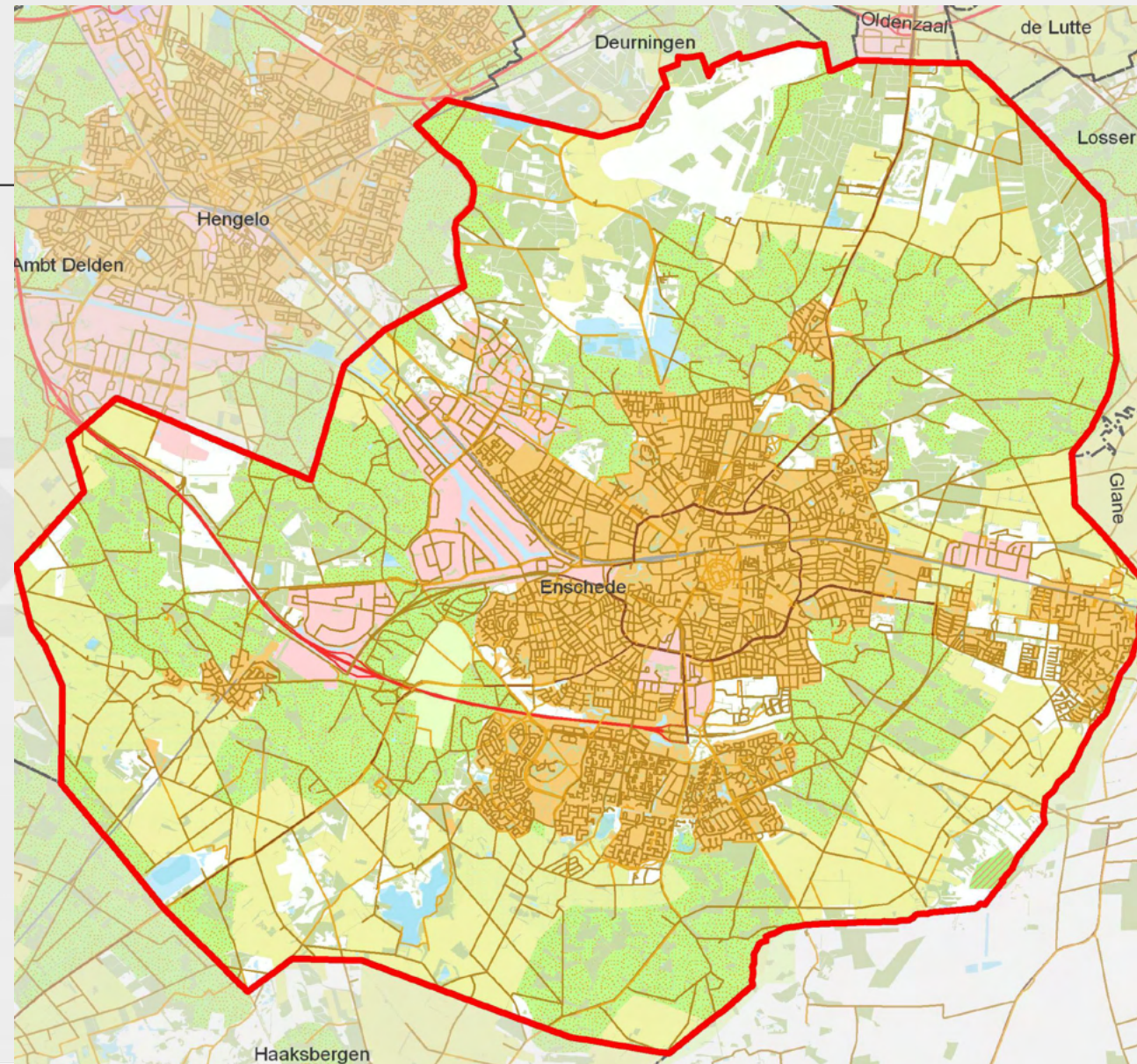
# City of Enschede

- Built area: approx. 7 to 5 miles
- Green environment
- Fabric industry closed in the sixties
- Technical University of Twente founded at the same time
- over 12,000 (international) students
- DNA of the city: technology, innovation and creativity

<https://www.enschede.nl>

<https://www.facebook.com/gemeenteenschede>

[https://twitter.com/Gem\\_Enschede](https://twitter.com/Gem_Enschede)





# City of Enschede





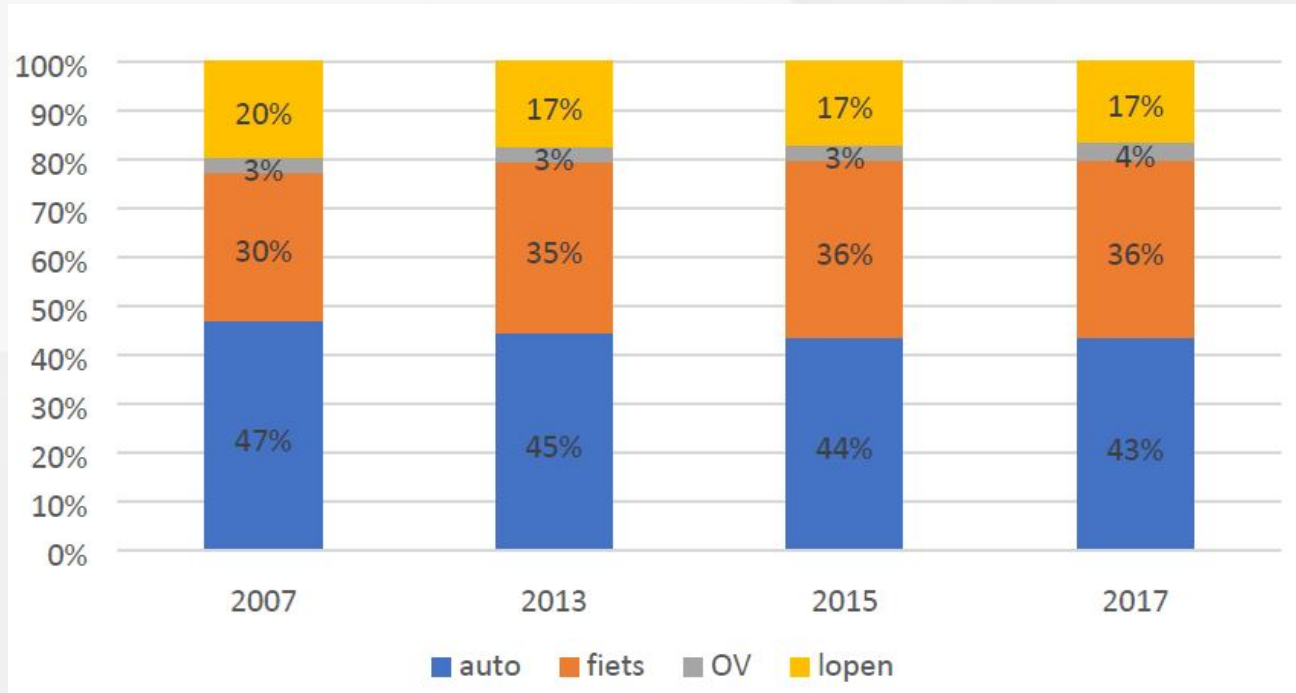
# Facts and figures

---

- car possession in Enschede: average 0.48 cars per inhabitant
- car possession in the Netherlands: average 0.54 cars per inhabitant
- 22.8 million 'normal' bicycles and 1.8 million e-bikes in the Netherlands
- all together 1.44 bicycles per inhabitant
- Enschede: 87 miles bike lanes and separate bike paths > 4.3% of total paved surface



# Modal split in Enschede

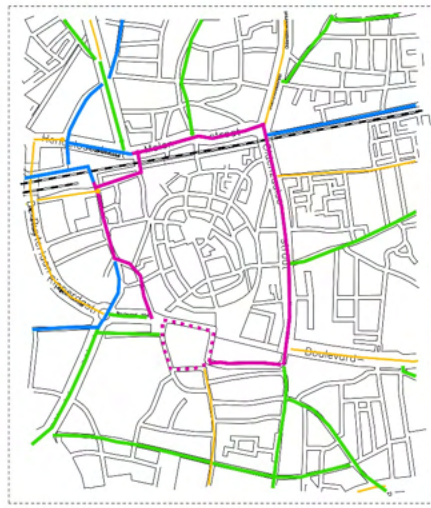


Average overall

Bike mode share on bikeable distances (< 4.6 miles) in 2012: 33% and in 2020: 43%!



# Cycling network

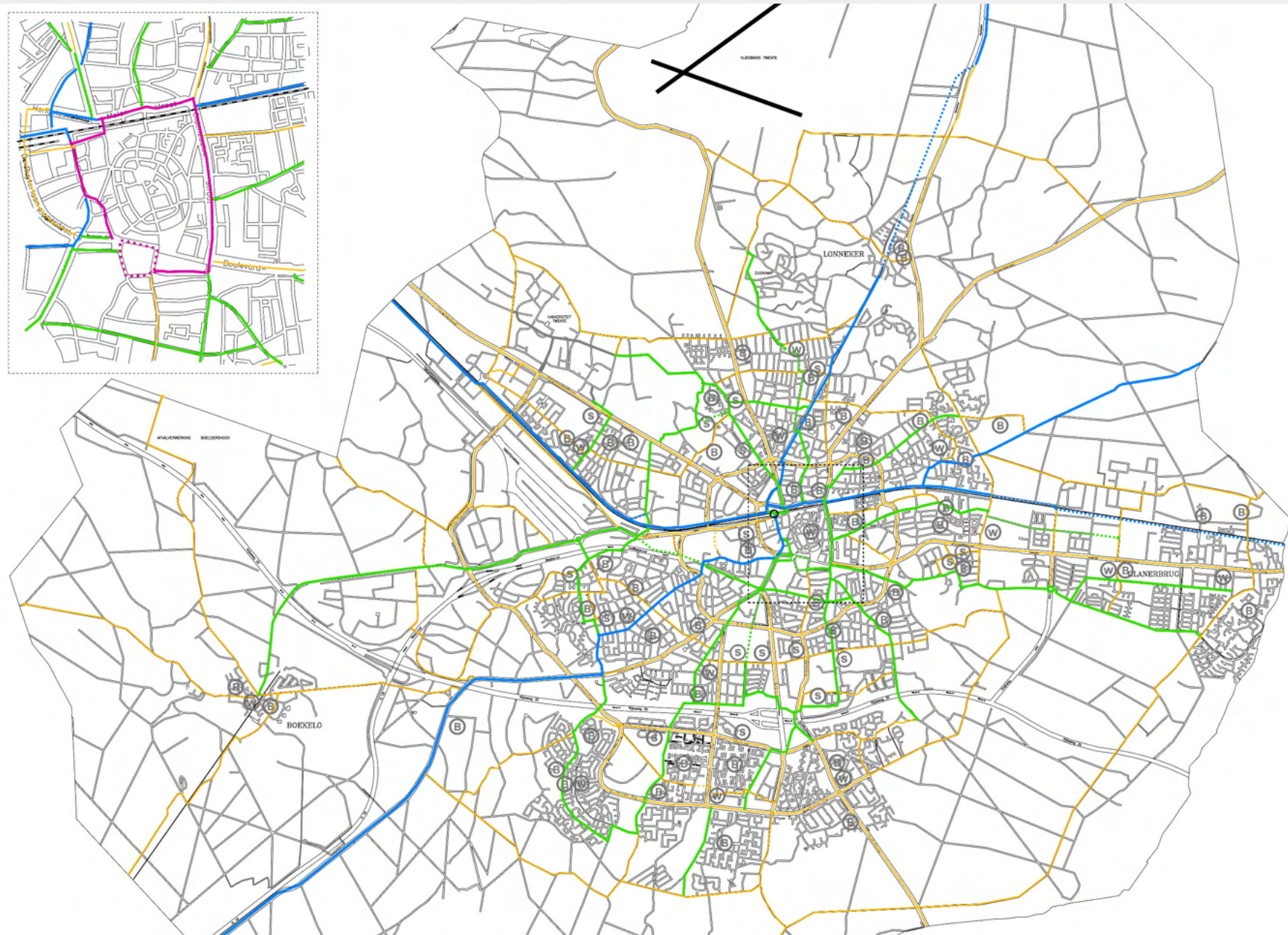


## LEGENDA

-  Regionale routes  
Hier kiezen we ontwerpuitgangspunten zoals vanuit die regionale aanpak gelden.
-  Doorfietsroutes  
Hier kiezen we voor kwaliteit voor de fiets. Vaak een fietsstraat, maar dit hoeft niet.
-  Basis fietsnetwerk  
Hier kiezen we voor goed onderhoud van bestaande wegen.
-  Centrum fietsring

-  Doorgetrokken streep  
Trace duidelijk en ambitie duidelijk
-  Stippellijn  
Trace en/of ambitie nog niet duidelijk

-  Winkels
-  Basisonderwijs
-  Voortgezet onderwijs





# Cycling facilities





# Cycling facilities





# Thank you for biking!





# Q&A



**THANK YOU!**

11<sup>th</sup> Annual Silicon Valley Bike Summit Aug 12 & 13, 2021